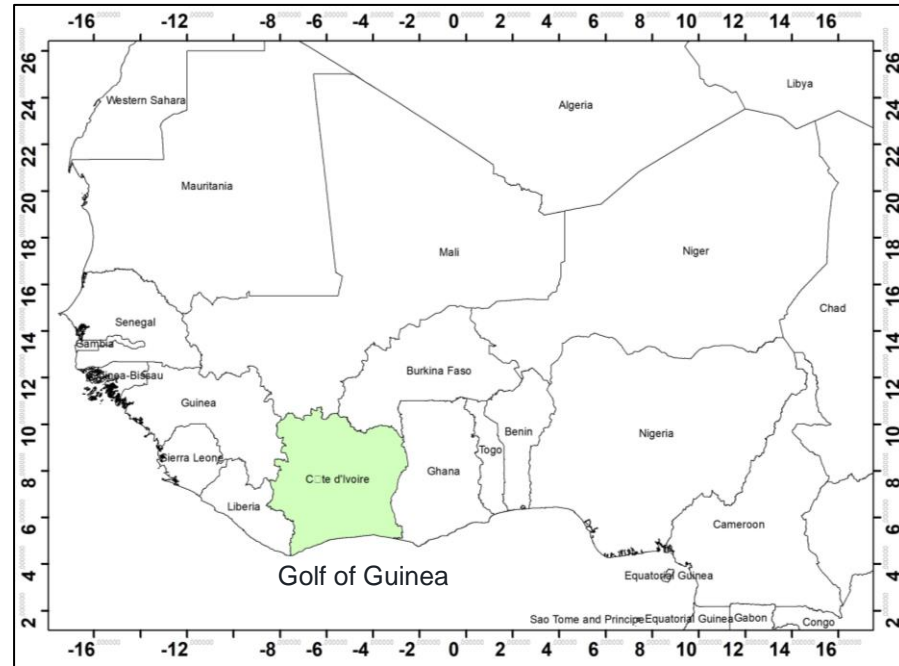
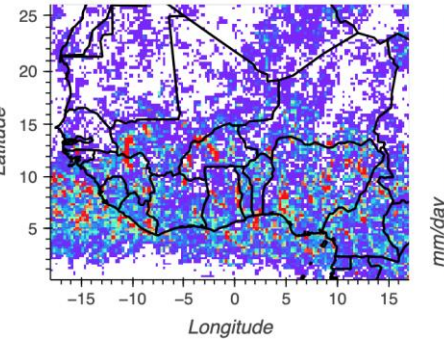


Location: West Africa/ Côte d'Ivoire

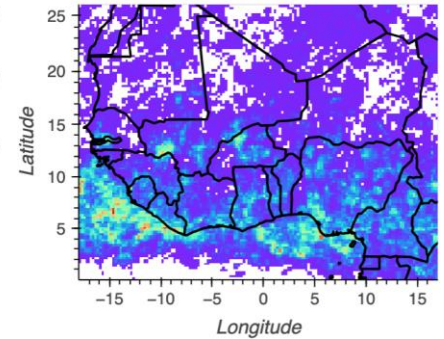
Mean Rainfall of June from 2015 to 2021



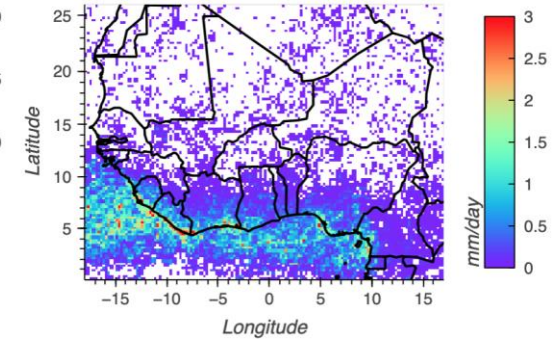
Convective Non-shallow Rainfall



Stratiform Rainfall

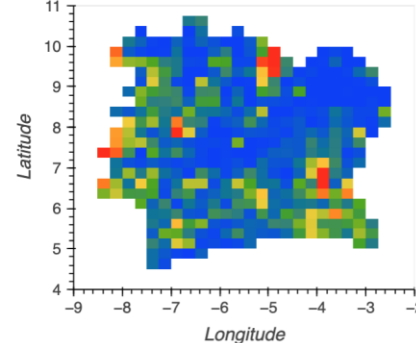


Convective Shallow Rainfall

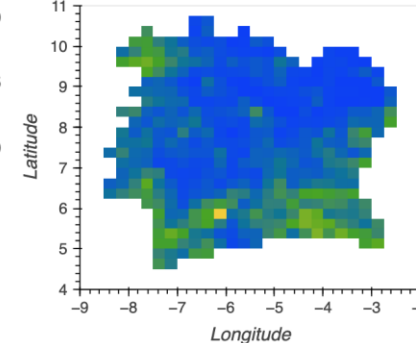


- Deep convective rain dominates over West Africa in June before the arrival of the Monsoon
- It is more pronounced along the coastal areas

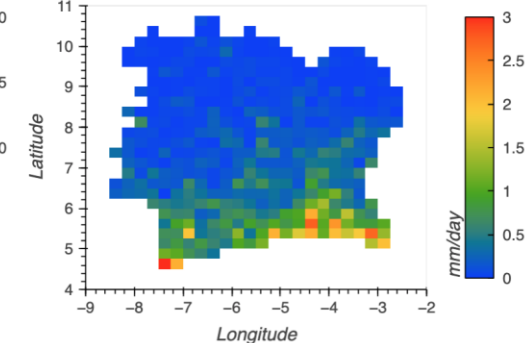
Convective Non-shallow Rainfall



Stratiform Rainfall



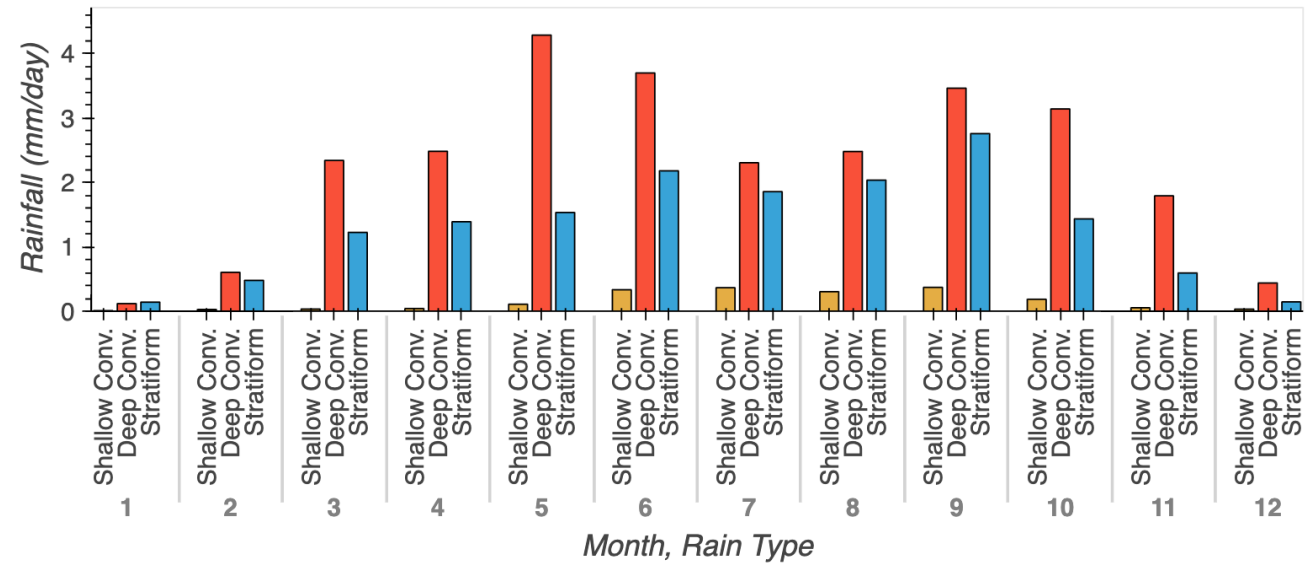
Convective Shallow Rainfall



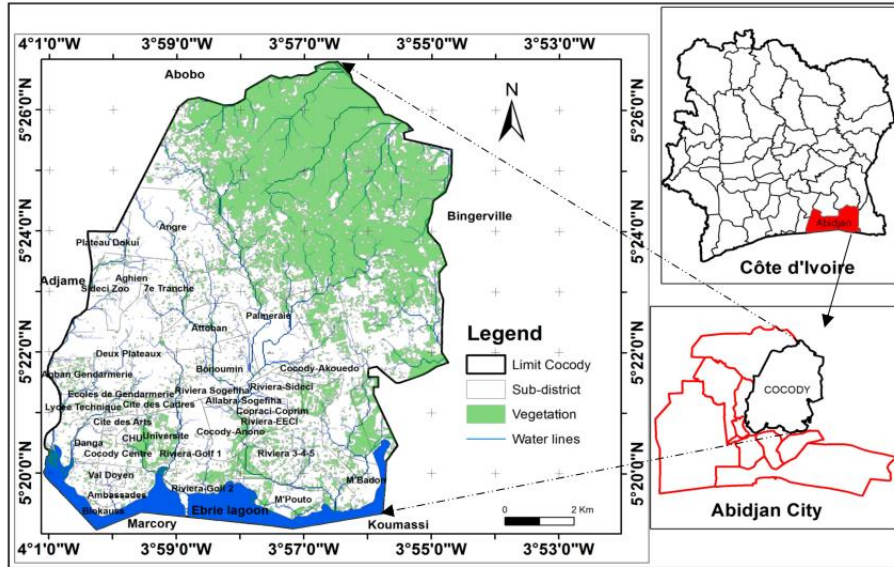
Dr. Armand KABLAN
University FHB, Côte d'Ivoire

- All three rain types contribute to high rainfall over the south part of Cote d'Ivoire

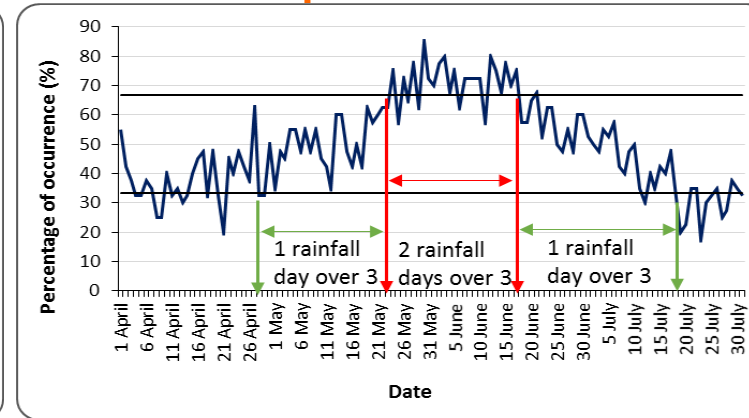
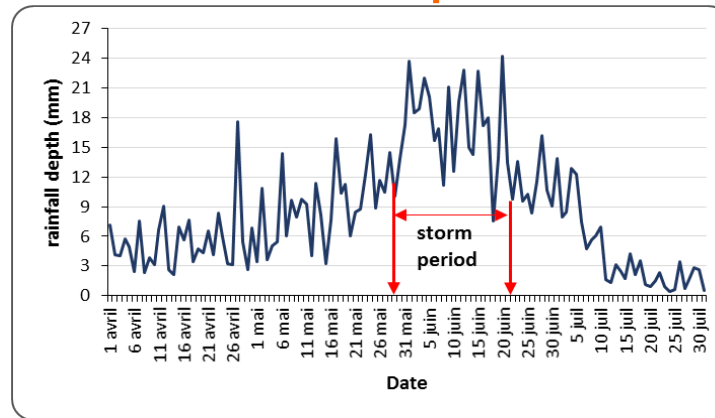
Cote d'Ivoire Monthly Mean Rainfall by Rain Type, 2015-2021



- Deep convective rain is the main contributor to intense floods over the southern coast during May and June



Critical Period = May 29 – June 18



Flood critical period of the year (Kablan, 2017)